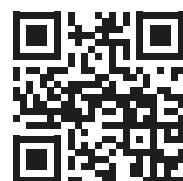




anthos.com



BU MEDICAL EQUIPMENT
SEDE LEGALE ED AMMINISTRATIVA
HEADQUARTERS Cefla s.c.

Via Selice Provinciale, 23/a
40026 Imola - Bo (Italy)
tel. +39 0542 653111
fax +39 0542 653344

STABILIMENTO
PLANT

Via Bicocca, 14/c
40026 Imola - Bo (Italy)
tel. +39 0542 653441
fax +39 0542 653601



Making Your Life Better.

CE
0051

07/2025
ACL96GB25/ISO0
Due to our policy of constant technological upgrading, technical specifications may be subject to change without prior notice.
According to the standards in force, in non-EU areas the availability and specifications of some products and/or features may vary. Please contact your local distributor for further information.



L9
L6



EN
Anthos
Classe L9
Classe L6

CONTINENTAL
INTERNATIONAL
SIDE DELIVERY
HYBRID

ev
olve

evolve

evolve technology.

A new interface provides a user experience that exceeds every expectation. Voice controls enhance effectiveness when interacting with cutting-edge technology. Special instruments and functions aid the dentist's professional development.

evolve ergonomics.

A wide range of ergonomic solutions, International model included, meet every professional need. Three different versions maximise in-practice installation versatility. Custom styling, plus a patient chair that ensures unmatched comfort.

evolve competence.

Advanced functions and instruments for every dentistry specialisation, plus a latest-generation micromotor for conservative dentistry. Integrated systems ensure dentists are able to make the very most of their valuable skills.



**Anthos
Classe L.**



Anthos
Classe L9
Continental

ENJOY THE DIFFERENCE





ENJOY THE DIFFERENCE

Anthos **Classe L9** International



6



7



Anthos
Classe L9
Side delivery



ENJOY THE DIFFERENCE

Anthos
Classe L9
Hybrid



REAL TIME

Advanced interface

7" touch screen for the Full Touch Multimedia control panel. The dentist can easily set the operating functions, customise all integrated device parameters, control patient chair movements and manage the hygiene devices. Data on conservative, endodontic and implant

work is given in real time for precise control by the dentist during treatment. The Full Touch Multimedia control panel also displays images and videos. The protective glass is impact and water-resistant and can be disinfected easily and safely.



Easy to use.

Intuitive on-screen graphics speed up work. Smartphone-like operation makes for an extremely simple, up-to-the-minute user experience. Available as an option on Continental, the LEFT SIDE PACK configuration allows use of the instrument control panel to the left of the dentist's module.

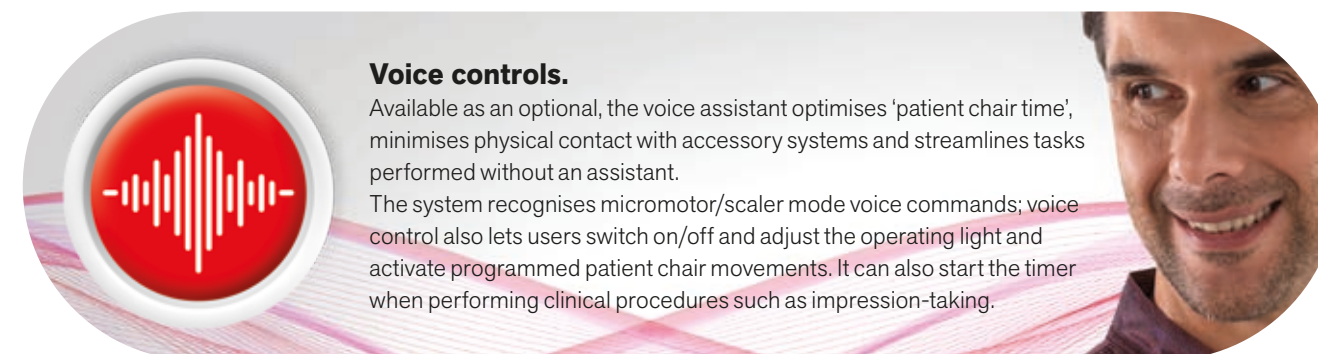
NFC connectivity.

The dental unit features NFC connectivity. The system has a microchip integrated on the dental unit and an IP68-rated silicone NFC bracelet. This practical, light, easily sanitised bracelet is brought up to the side of the dentist's module with the NFC symbol: the dental unit instantly recognises the dentist and the software applies the settings he/she previously saved during registration. Useful in multi-user practices, the system has 20 memory slots (i.e. for up to 20 dentists). Users can save personalised settings for the patient chair, for integrated instruments, interface preferences and automatisms for operating light, cuspidor bowl and cup. Every time the dentist links to the dental unit by bringing the bracelet up against the dentist's module, the system recalls all saved custom settings.



Voice controls.

Available as an optional, the voice assistant optimises 'patient chair time', minimises physical contact with accessory systems and streamlines tasks performed without an assistant. The system recognises micromotor/scaler mode voice commands; voice control also lets users switch on/off and adjust the operating light and activate programmed patient chair movements. It can also start the timer when performing clinical procedures such as impression-taking.



USB.

A convenient USB port lets individual dentists save and download their personalised settings, a feature that's extremely useful in surgeries with two dentists or more. Acquired images can also be downloaded.



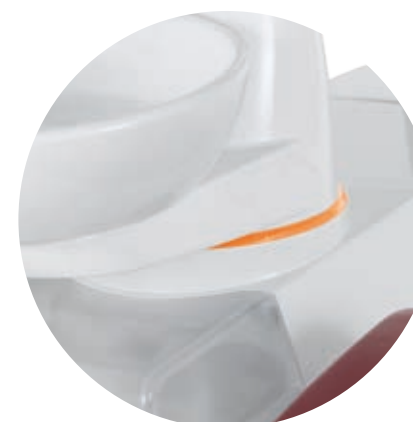
Images and videos.

The Multimedia control panel lets you watch clips on dental unit use and maintenance.



Multimedia control panel.

Camera-captured images and X-rays acquired via the integrated system can be displayed in HD.



Interactive LED Pack.

Optional application that makes dental unit design more appealing and provides user-friendly info on the status of the various integrated functions via LEDs. There are several warnings/indicators: their colour provides dentists with a range of useful information, from scaler mode to hygiene cycle progress on the dental unit. During root canal treatment with the apex locator on, the LED ring changes colour, passing from green to yellow to red according to the distance from the apex (this mirrors the on-panel bar colours).

Integrated clinical performance

Seamless integration between brushless micromotor, peristaltic pump and surgical handpiece create an implantology system piloted by the powerful microprocessor of the 7" multitouch control panel. Speed, torque and pump delivery rate parameters can

be selected and saved at any time. A simple, user-friendly interface lets users manage every single work stage quickly and precisely. This set-up eliminates the bulk associated with on-cart stand-alone systems.

IMPLANTOLOGY



i-MMs micromotor.

This powerful, autoclavable micromotor delivers a torque of up to 70 Ncm and, together with the EVO R20L contra-angle, provides a perfect response to the implantologist's every need. The software allows precise, safe control of speed and torque.



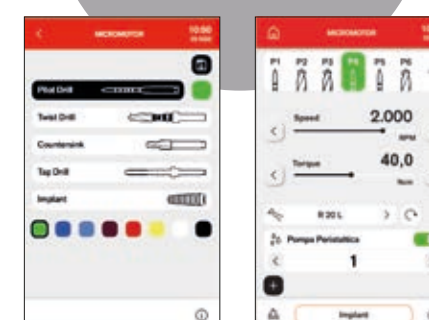
EVO R20L contra-angle.

Designed for implant surgery, it can be removed, autoclaved and heat-disinfected. Features internal cooling and external spray. LED lighting is powered by an integrated generator.



Peristaltic pump.

Controlled by the Full Touch control panel, the peristaltic pump is incorporated on the dentist's module, thus eliminating the bulk of modules, carts and rheostats.



Torque curves.

This function allows constant monitoring of the torque delivered by the micromotor and provides a complete report on each stage of treatment. Exportable via USB stick: the .csv format is used for academic assessment, the PDF provides a document to be filed with medical records and the .png file is perfect for fast viewing on the Multimedia display. The clinical information highlighted by this function provides sound support for any subsequent treatment on adjacent or contralateral teeth. The implant tightening torque is also recorded and can be included in the surgery documentation.

ENDODONTICS

Endodontic specialisation

Endodontic specialisation relies on a complete work system combining a dedicated micromotor equipped with Autostop, Autoreverse and Autoforward functions, a database of endodontic files and an optional apex locator. All of these can be precision-controlled via the Full Touch

panel. Essential data is displayed during treatment, ensuring complete control. The software automatically sets torque and speed; alternatively, dentists can set values according to personal requirements.



Contra-angle.

With a 4:1 reduction ratio, EVO E4 can be autoclaved and heat-disinfected. A miniaturised head aids access to difficult-to-reach treatment zones.

Reciprocating mode.

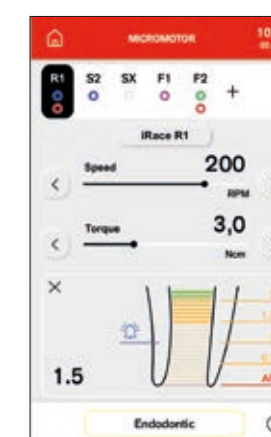
A combination of reciprocating mode, with alternating rotation movement, and the EVO E4 contra-angle allows the use of RECIPROC®, RECIPROC BLUE® and WAVEONE GOLD® endocanal burs. The endodontic bur brand names are not owned by Cefla or any of its subsidiaries.

i-MMs micromotor.

Light, compact and fully autoclavable. Fine, precise torque adjustment.

Apex locator.

The apex distance is displayed on the Full Touch display during root canal instrumentation. The nearing of the apex is verified by the ENDO software. Once the apex is reached the Apex-Stop function interrupts micromotor rotation.



Perfect patient chair

Designed with people in mind, Classe L9 is a workstation that enhances the relationship between the dentist and the patient. Dialogue, engagement and discussion of the clinical situation are simple and immediate.

The working environment is serene. The seated position allows the dentist to be in front of the patient, with the benefit of direct and more engaging eye contact when explaining therapeutic treatments.



Footrests.
Powered footrests and optimal height positioning allow comfortable access for everyone.

Working comfort.
Dental team members have easy access to all operating positions.



Dental impressions.

In the seated position, the patient chair allows the dentist maximum operating comfort while taking impressions and for all frontal view activities.



Patient presence sensor.

The patient chair can be equipped with a sensor (optional) that detects patient presence; this is connected to the stand-by function, thus reducing energy consumption when the patient chair is not actually occupied. Where the Di.V.A. is employed, the sensor gathers and processes statistical data on dental unit use. Dentists can, at their discretion, link the sensor to automatisms (e.g. operating light on/off according to whether a patient is present or not).

The advantage of movement

Tapered patient chair shaping provides dentists with optimal ergonomics. With the Sliding function the dentist no longer has to reposition the light and instruments during treatment, thus maintaining the work zone set-up. Backrest movement is synchronised with forward seat

shift, ensuring dentists enjoy operating space savings in the 12 o'clock zone. Moreover, patients - who perceive a reduced sense of on-back compression - enjoy greater comfort than on traditional chairs.



Soft Motion.
With Soft Motion technology, start and stop movements are gradual, smooth and virtually without vibration or noise. From the patient's viewpoint, this is particularly relaxing.

Slow Mode.
Available as an option with Soft Motion, this mode lets dentists make extremely fine patient chair movement adjustments. These almost imperceptible adjustments are extremely useful during implantology work or while using the microscope.

DIAGNOSTIC INSTRUMENTS

Effective communication

Classe L perfectly integrates with the diagnostic tools used in digital workflows. X-ray imaging and image acquisition on board the dental unit document clinical conditions in real time. With the integrated camera, the image can be duplicated on the 7" Full Touch Multimedia control panel and can also be enlarged for a better view of the details. When the L9 is connected to the surgery

network, images from a PC can also be viewed. The patient has a clear picture of his or her condition. Immediate and clear sharing of information strengthens the relationship with the dentist. This facilitates accurate evaluation of the patient's state of health and treatment possibilities.



RX DC – HyperSphere technology.

Intra-oral X-ray system integrated with the dental unit via a handheld wireless device. Outstanding images thanks to the parallelism that stems from 30 cm collimation and a focal spot of 0.4 mm. Rotating around the spherical coupling, the tube head can reach any position.



Zen-X.

X-ray sensor integrated in the dentist's module, ready to use, with USB cable. Able to capture HD images with low X-ray doses, the sensor comes in two different sizes. The sensor can be sanitised and is IP67-certified against water and dust infiltration.



Control panel.

The "pinch to zoom" feature on the Full Touch Multimedia control panel with smartphone technology allows users to enlarge or reduce HD images acquired with a camera or digital X-ray sensor or saved from a USB port or PC.

22" LED Monitor.

Full HD 16:9 monitor with excellent brightness and contrast levels thanks to the LED light sources. Viewable from every angle, also available in a multitouch version and installable with 2 different types of support.

C-U2 HD camera.

High-resolution images aid dentist-patient communication. Easy to use (no manual adjustments required), its slim design means zones can be reached with ease.



Venus LED MCT View.

The Venus LED MCT View with integrated 4K camera is a powerful tool for sharing clinical information with patients to aid their understanding of treatment.



Anthos
Classe L6
Continental

ENJOY THE DIFFERENCE





ENJOY THE DIFFERENCE

Anthos **Classe L6** International





Anthos
Classe L6
Side delivery



ENJOY THE DIFFERENCE

Anthos
Classe L6
Hybrid



TOUCH LCD

Fast and intuitive

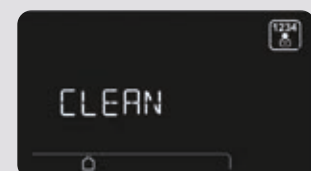
The colour icons on the new control panel with LCD touchscreen display are designed for maximum user-friendliness. Activation of controls is immediate and the

display shows clear information on the functions used. Each individual instrument and all integrated devices can be easily and quickly accessed.



Multi-profile feature.

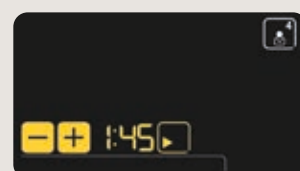
Cuspidor-cup system automatisms, favourite working positions and settings for every single instrument can be saved for up to 4 different users, ensuring maximum versatility of use. This function is useful in multi-dentist surgeries or in clinics where there is high turnover of specialists.



Clean.

Function that disables the keyboard when the glass surfaces of the panel need cleaning, thus preventing involuntary activation of controls.

CLEAN



Timer.

With this function, operations that require verification of application times, such as the use of etching gel or compounds, are easily kept under control.



Endo.

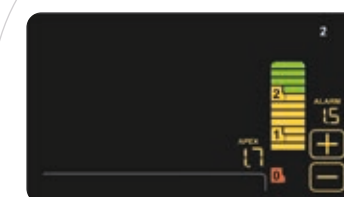
The i-MMs micromotor (optional) gives dentists access to all endodontic functions, which are controlled in an integrated manner by the panel on the dental unit.

ENDO



Endodontics. In this mode, the optional integrated endodontics system optimises the ergonomics of root canal treatment. Consists of micromotor, Autostop, Autoreverse and Autoforward functions and an electronic apex locator. During endodontic

treatment, the colour LCD control panel displays key data to give the dentist full control of treatment. The software automatically sets torque and speed; alternatively, dentists can set values according to personal requirements.



Apex locator. The apex distance is displayed on the LCD during the root canal instrumentation phase. The nearing of the apex is verified by the ENDO software. Once the apex is reached the Apex-Stop function interrupts micromotor rotation.

Optimal workflow

The integrated multimedia HD image acquisition and X-ray system helps shorten the time spent in the patient chair. Moreover, patients benefit from involvement in the process, ensuring they're well informed about the

proposed treatment. Faster diagnosis and effective communication with the patient mean faster workflows and higher overall surgery profitability.

RADIOLOGY

RX DC – HyperSphere technology.

Intra-oral X-ray system integrated with the dental unit via a handheld wireless device. Outstanding images thanks to the parallelism that stems from 30 cm collimation and a focal spot of 0.4 mm. Rotating around the spherical coupling, the tube head can reach any position.

22" LED Monitor.

Full HD 16:9 1920 x 1080 pixel flat screen monitor with IPS panel to aid viewing from any angle. Outstanding brightness and contrast.

Zen-X. X-ray sensor integrated in the dentist's module, ready to use, with USB cable. Able to capture HD images with low X-ray doses, the sensor comes in two different sizes. The sensor can be sanitised and is IP67-certified against water and dust infiltration.



MULTIMEDIA

Display.

The monitor can display individual camera images or a mosaic of up to 4 images to make rapid comparisons.

22" LED Monitor.

Monitor with PC cable connection. A multitouch version, where the screen can be positioned via 2 different types of support, is also available.

C-U2 HD camera.

High-resolution images aid dentist-patient communication. Easy to use (no manual adjustments required), its slim design means distal zones can be reached with ease.

Spaces and styles without limits

ADVANCED ERGONOMICS

Streamlined shapes for a Continental module that features instrument tubing with increased elongation and instrument levers that minimise both vertical bulk and interference with the operating light. Each lever has individually adjustable traction force and balance.

Whatever the treatment zone, positioning is easy and ergonomic thanks to the broad excursion of the new, more compact module arm system. The transthoracic operating position can be reached with ease.



Cuspidor bowl with optical sensor.

The water-to-cup delivery system features a sensor that automates filling. Opting for a powered cuspidor bowl synchronises rinse procedures and patient chair movement.

(Optional on L6).



SideFlex technology.

Equipped with SideFlex technology, standard on the Classe L9 and optional on the Classe L6, the instrument levers ergonomically follow the lateral movement of the tubing. The coupling reduces on-wrist traction and fatigue while optimising instrument recovery from every working position. The SideFlex instrument levers can also be removed for sanitation.



Working comfort.

To adjust instrument height, pneumatic release is activated by an on-handle sensor. Optional sixth instrument and tray holder module, available in two sizes.



The International module streamlines the dentist's work thanks to excellent instrument accessibility and display visibility. A large transthoracic tray-holder module is also available, a useful aid during surgery sessions.



Assistant's module.

The module has 3 or 5 instrument holders. It can assume any position needed to maximise working ergonomics. The 2 cannulae can be combined with a selection of up to 3 handpieces, including camera, syringe and T-LED curing light or a dynamic instrument. The glass-protected touch screen controls all basic functions. A positionable stainless steel tray holder completes the accessory range.



Side Delivery.

The Side Delivery module perfectly combines optimal control panel visibility, instrument accessibility and organisation of the operating space. The instrument layout, the result of modern design and analysis of dentists' needs, ensures the best ergonomic grip of the instrument from any working position. Integrated motorisation (optional on the L6) in the module support column allows a 15 cm excursion, resulting in perfect adaptation to the working position of individual dentists. Mounted on the double articulated arm, the optional Professional tray holder ensures maximum efficiency, particularly in surgery and implantology.

INSTRUMENTS

Top performance

Classe L has a broad selection of state-of-the-art instruments, including the latest brushless micromotors with FIT (Fluorescence-aided Identification Technique) technology to detect any composite materials in the teeth. The 7" Full Touch control panel on the L9 and the LCD Touch display on the L6 control the instruments in

every work mode, providing clear easy-to-read operating instructions in real time. Turbine, micromotor, scaler, curing light and intraoral camera settings can be adjusted for specific dentistry specialisations. An intraoral camera or curing light can be added as the sixth instrument, also on the new International module.



POTENTIAL

In addition to their outstanding performance, full integration of instruments with dental unit electronics ensures users are able to exploit their full potential. Parameters can be personalised according to the specific discipline and/or dentist's profile. Together with its instrumentation, the Classe L provides a powerful tool for the dentist and the surgery as a whole.



Micromotors.

Two versions: i-MMr (3.3 Ncm) with LED; i-MMs (5.3 Ncm) with LED lighting, ready for endodontic and implantology applications. From 100 to 40,000 rpm.



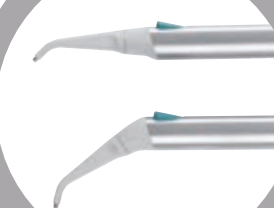
Scalers.

With or without LEDs, handpieces compatible with the best tips on the market. Highly useful in ENDO mode as root canal treatment instruments.



Turbines and contra-angles.

Dentists can use a broad range of turbines and contra-angles for specific dentistry tasks.



Syringes.

Ergonomically-shaped 3 and 6-way syringes are available. The metal syringe body and the tip (both straight and angled versions are available) can be removed and autoclaved.



T-LED.

T-Led has an emission spectrum for activation of the latest-generation composites. It features a swivel grip, a user-friendly interface and the bracket programme - one of the seven available - consisting of 5 brief, emissions.



HD camera.

The C-U2 has glass optics and a LED light diffuser. It incorporates an HD 16:9 sensor that captures high-definition clinical images.

CONSERVATIVE DENTISTRY

FLUO micromotor

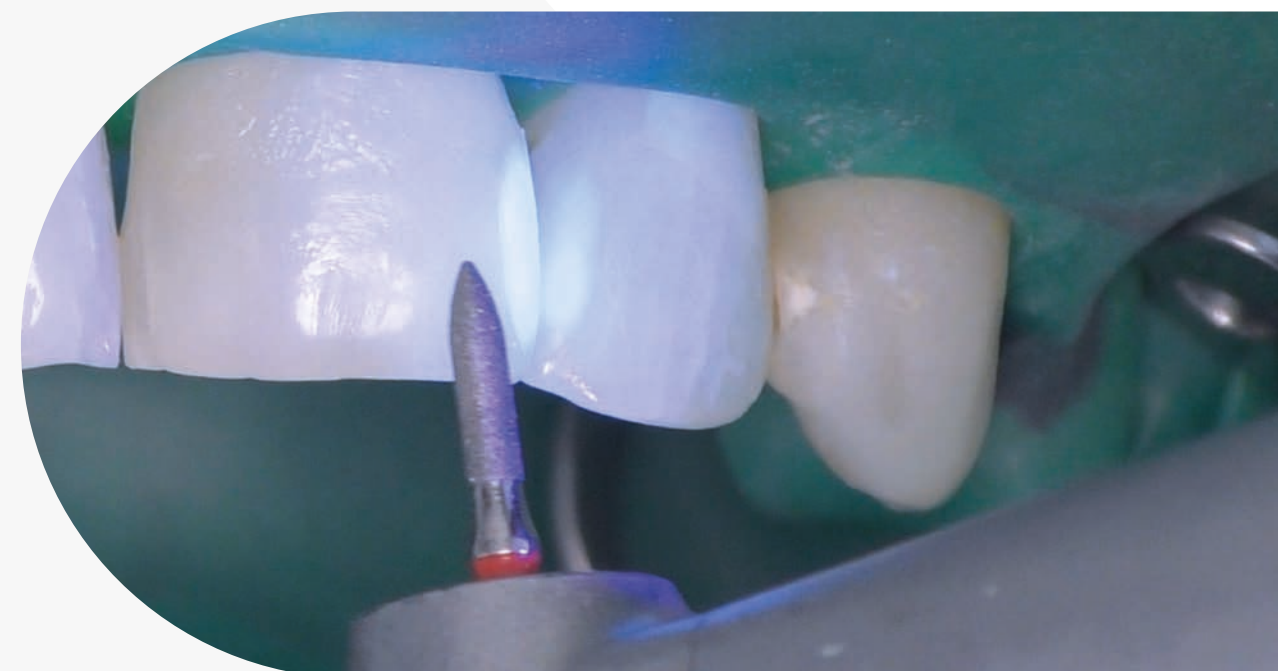
Always on the lookout for techniques to boost the dentist's productivity, Anthos brings the 'power of light' to the fore with cutting-edge LED technology.

Every tool that can enhance the doctor's effectiveness and increase the safety of procedures is our priority. That's why we've introduced FLUO micromotors.



For orthodontics and aesthetic treatment.

Following the completion of fixed brace treatment, after bracket removal, identifying excess composite material is simpler and more effective if the material is clearly highlighted by the fluorescence-activating LED light emitted by the micromotor. Being able to detect the composite material that secures the invisible attachments using UV LED light is extremely useful during removal procedures. Dentists can thus proceed more safely, confident that no composite traces will be left on the tooth.



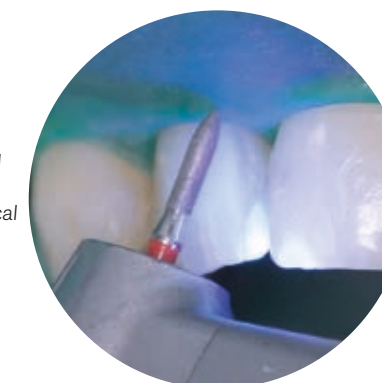
Micromotors with FIT technology.

In addition to improvements that reduce both weight and noise, Anthos micromotors are now available with FIT (Fluorescence-aided Identification Technique) technology to detect any composite materials on the surface of the tooth.

Activating the UV LED lights incorporated in the micromotor highlights all composite materials to distinguish them clearly from natural tooth. In the case of old composite that needs to be reworked, this visual aid helps dentists shorten treatment times and operate more precisely and safely.

It also provides excellent dental inspection support by clearly identifying any composite materials present.

"The development of this functionality was carried out with the scientific collaboration of Professor Antonio Cerutti and Professor Zsolt Kovacs. Clinical images courtesy of Professor Antonio Cerutti."



SUPERIOR COMFORT

Evolved wellbeing

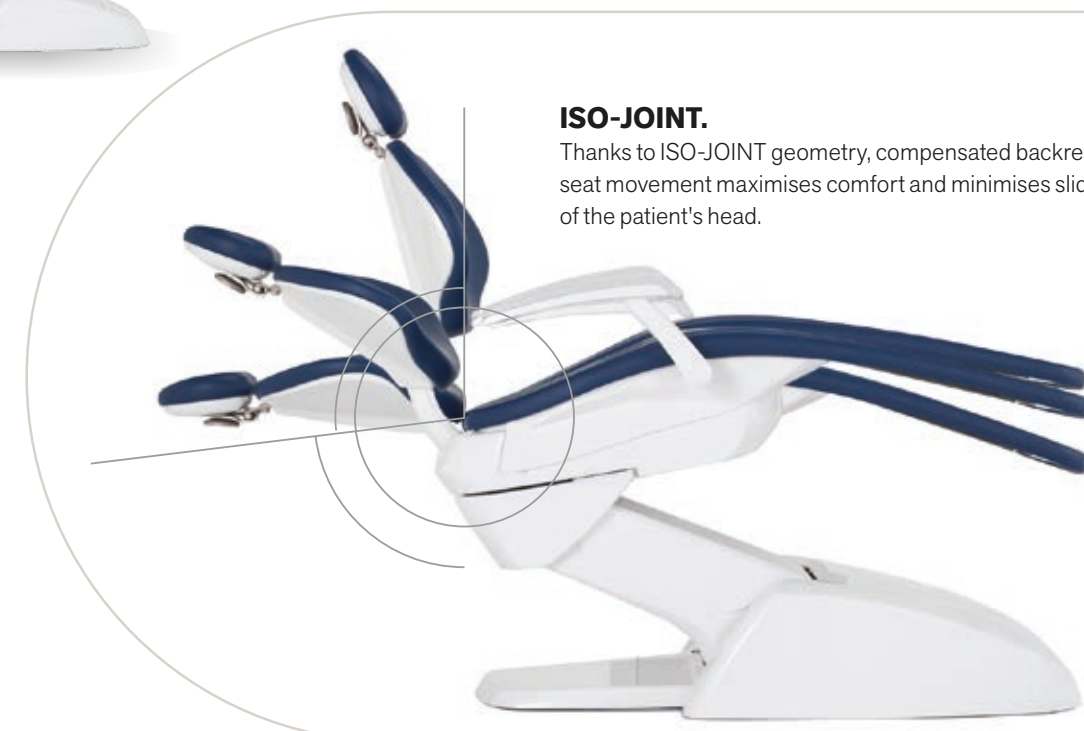
Available with a conventional seat or with a knee joint in the L9, the chair is the strongpoint of the Classe L range. The padding, with a durable shape and material structure,

comfortably seats patients of all builds. The exclusive movement of the articulated seat ensures comfortable access for everyone.



Headrest.

In addition to an adjustable 2-axis version with mechanical lock, the Comfort model features a pneumatic lock system and 3-axis movement for freer, more precise positioning.



ISO-JOINT.

Thanks to ISO-JOINT geometry, compensated backrest-seat movement maximises comfort and minimises sliding of the patient's head.



Memory Foam padding.

Optional Memory Foam padding offers patients an exclusive wellness experience. Swivel armrests offer comfort and feature inserts that match the upholstery.



Foot control.

Three different ergonomic designs are available (cabled or wireless versions). These allow activation of Chip Air/Water, patient chair movement and recall of saved positions.



Stop Vacuum.

Device integrated in the patient chair base: when pressed it stops suction without the user having to replace the cannulae in the holders.

Made-to-measure lighting

Proper lighting of the treatment area is a must. Perfect lighting of the oral cavity was the aim of the design choices to provide top-performance professional lighting fixtures.

A choice between two different LED-source operating lights. They feature a 3-axis joint, a hermetically sealed front panel and a "no touch" sensor to adjust light intensity.

OPERATING LIGHT



Venus Plus SCT Composite.

LED lamp equipped with 4 light sources, placed outside the reflector body, with intensity adjustable from 3,000 to 50,000 Lux.

This creates a large spot-lit area, minimising shadows.

A further 2 central light sources generate a beam with different wavelengths: this prevents pre-polymerisation of composites while ensuring excellent illumination of the oral cavity.

In addition to a high Colour Rendering Index (>90), a large spot-lit area and removable, sterilisable handles, it also features an infrared sensor for switching on/off/adjusting intensity.



Venus LED MCT.

The Venus LED MCT (Multi Colour Temperature), supplied as standard on Classe L9, allows the use of 3 different colour temperatures to ensure perfect lighting of the oral cavity in every circumstance. Warm 4300K light for surgical treatment, neutral 5000K light for conservative dentistry and cool 5500K light for realistic colour capture.



Light colour. All temperature variations, from warm to neutral or cool and vice versa, can be activated with ease, ensuring a perfect view of the operating area according to the treatment being performed at all times. Optimal light beam efficiency minimises shadows in the oral cavity.

Curing Mode. This function modifies light wavelength to prevent pre-polymerization of the compounds, simultaneously ensuring optimal lighting.



4K ULTRA HD

Venus LED MCT View.

The Venus LED MCT View combines a 4K camera with PC software to capture ultra-high-definition images and videos. The Full Touch control panel and multimedia system let users operate the various functions (recording, zoom, image capture and Smart Focus) via user-friendly icons or optional voice-activated controls. The Smart Focus system features liquid lenses, ensuring fast, optimal digital focusing. In addition to smoothing practitioner-patient communication, the camera is also, thanks to recordings and multimedia streaming, a useful aid for clinical training, treatment documentation and academic disclosure.

HYGIENE

Safety in the surgery

A broad selection of integrated hygiene systems ensures workplace safety. Safety for patients, personnel and the dentist. In addition to automatic devices that prevent contamination of internal ducting, the design features

effectively minimise the risk of cross-contamination. The colour LCD control panel gives the user full control over sanitisation cycle progress.



Essential design.

Instruments fit into special holders incorporated in the unit body. Meticulous design eliminates the need for accessories and significantly speeds up the initial procedures. Moreover, the volume of the tank reduces filling frequency and, as filling is done from above, there is no need to access the unit body interior.



W.H.E.

Certified DVGW continuous disinfection system that prevents backflow contamination of the dental unit water supply and acts against all water-borne contaminants. The use of Peroxy Ag⁺ is recommended.



BIOSTER and FLUSHING.

The automatic BIOSTER system performs intensive disinfection of instrument spray internal circuits with an antiseptic liquid (Peroxy Ag⁺). FLUSHING eliminates any stagnant liquid from the ducts with a quick rinsing action.



A.C.V.S.

Automatic system for the flushing and disinfection of the suction system. Allows sanitisation to be performed between one patient and the next.



S.H.S.

Device that feeds water to the sprays as an independent alternative to mains water. Works by way of a tank filled with distilled water: this prevents limescale build-up. Extremely useful where mains water is hard.

EFFECTIVENESS

Constant protection



Double filters.
These easily removable filters make emptying and cleaning tasks simple.



Removable instrument levers.
The SideFlex instrument levers can be removed to aid cleaning. Optional on L6.



Handle.
The Continental module handle is removable and disinfectable.



Removable support.
On the Continental module, the instrument support is removable and autoclavable.



Operating light.
The handles are removable and autoclavable.



Handpiece support.
Instrument support mat in autoclavable silicone.



O.D.R.
As-standard mechanism that automatically emits an air jet to clean any residual liquids or solids from the handpiece after use.



Unit body access.
Wide opening on the side of the unit body for easy access to the integrated systems.

REMOTE ASSISTANCE

Anthos Connect



All products in the Anthos dental unit range are equipped with an integrated device that allows internet connection. This means the practice can rely on a real-time remote diagnosis and technical support service. Moreover, Di.V.A.* (Digital Virtual Assistant) lets dentists track their use of the dental unit, of the instrumentation and of the completed disinfection cycles, all on a simple dashboard.

Just open any browser to access the digital virtual assistance services website. Constantly updated, these services are available on the cloud, are specific to the purchased model and do not require any software downloads.

*Digital Virtual Assistant



General use.

It's possible to monitor usage of a single dental unit or the complete installed machine pool. This means a dental practice owner or a dental practice chain can track how their dental units are being used, as quantified by the optional sensor that detects patient presence or operating light activation.



Disinfection cycles.

The Di.V.A. tracks frequency of hygiene system use. It logs each system start to build up a record of performed disinfection cycles. Useful for in-practice inspections, it also estimates consumption and monitors effective reactivation of equipment.

Tutorials and user manuals.

Thanks to Di.V.A., users can access tutorials specific to the purchased model (e.g. a video showing how to disassemble the cuspidor bowl or fill the tanks used for disinfection). Users also have direct access to the constantly-updated online use and maintenance manual.



Using the instruments.

The dashboard lets users monitor how the integrated instrumentation is actually used, with info on individual instrument work modes (Conservative, Endo, Implant) included. This helps estimate maintenance requirements or assess the need for upgrades on some machines.



Patient sensor.

The patient sensor gathers and processes statistical data on dental unit use; the information is transmitted to the Di.V.A. and displayed on the dashboard.



The value of choice

A broad range of accessories lets dentists personalise the operating unit according to their specific needs.



Seats.

A range packed with ergonomic solutions.

S9 is the latest-generation saddle-shaped active seat with tilt mechanism. Evens out weight distribution and corrects posture to minimise strain on the spine.

S7 for the dentist, height adjustable and with the option of adapting the backrest angle.

S8 for the assistant, with a circular seat to aid the frequent position adjustments required during treatment.

Each model contributes to maintaining energy levels and a feeling of well-being throughout the day.

Backrests.

A choice of three backrest types - narrow, wide and Nordic - meets all the dentist's ergonomic needs.

As always, the backrest guarantees patient comfort and easy access.



Wide **backrest**



Narrow **backrest**



Nordic **backrest**

COLOUR RANGE

141	171	Papyrus Beige
142	172	Anatolian Hazelnut
143	173	Arabian Gold
140	170	Brazilian Brown
144	174	Ruby Red
102	198	Atlantic Blue
113	183	Pacific Blue
106	196	Mediterranean Blue
136	186	Indian Blue
135	194	Venetian Red
115	195	Scottish Salmon
132	192	Blueberry Violet
134	184	Japanese Wisteria
103	182	Nevada Yellow
123	193	Polynesian Green
101	197	Caribbean Green
137	187	Satin Silver
121	199	Anthrax Grey
130	180	Graphite Black

Standard upholstery



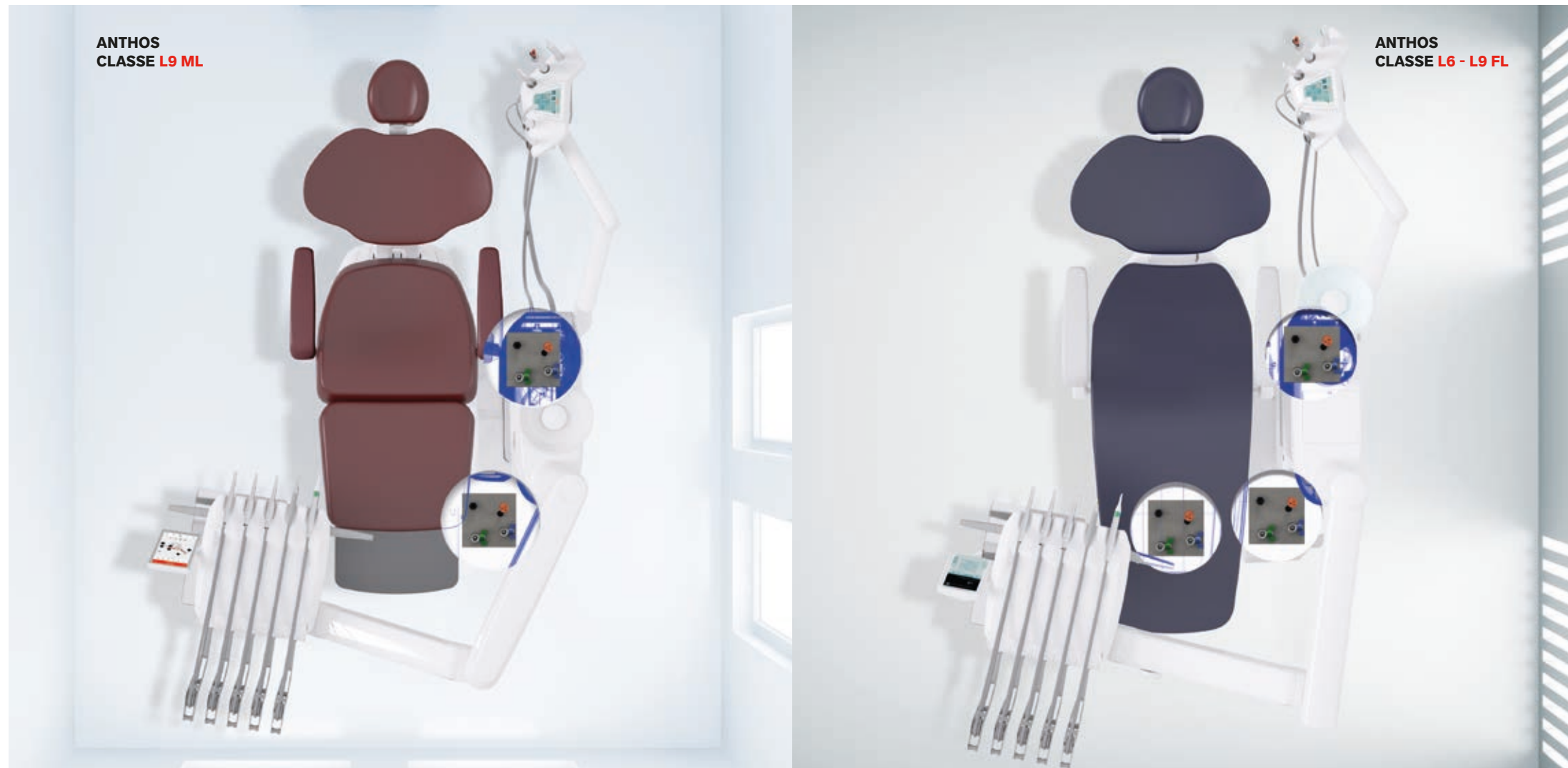
Memory Foam padding

Personalised choice, versatile layout

Multi-connector system.

Choosing the best practice layout is easier than ever. With the multi-connector system, replacing an old dental unit with a new Anthos model is work-free as the appropriate installation kit can be selected to match the existing power outlets at the time of order.

MULTI-CONNECTOR



Installation kit.

S – connections are located under the patient chair leg rest (standard)*
K – connections are located under the front of the unit body
P – connections are located under the rear of the unit body



* not available for patient chair with knee-break on Classe L9